


# Riverbed SteelCentral

---

Your command center for application performance.  
Drive performance insight...not hindsight.



# Application performance from the perspective that matters most: Yours

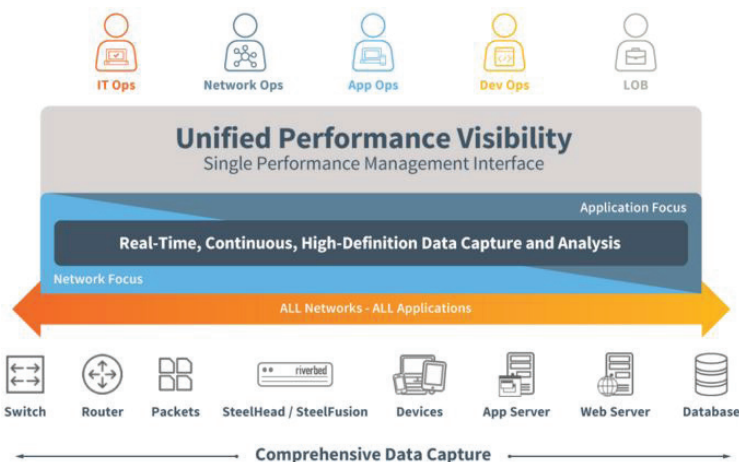
Today, application performance equals business performance. Improving IT collaboration and troubleshooting is critical in today's application-driven business world to minimize downtime and maximize productivity. At the same time, application complexity—with cloud, SaaS, hybrid networks and end-user mobility—has grown beyond the ability of the old-school, domain-centric performance management tools to manage efficiently.

An “application” is not just the software code sitting on a server, but a very complex combination of services and databases; physical and virtual servers hosted in on-premise datacenters and in the cloud; multiple networks connecting everything; and finally end-users on many device types from many locations accessing the application. Any piece of the puzzle, any flaw in the service, can slow performance down or cause it to fail completely. Unfortunately, companies typically take a point solution approach to managing performance with multiple, siloed tools that don't interact with one another.

Riverbed® SteelCentral™ takes a new approach to application performance management. It captures and analyzes performance data, deeply and broadly, across all networks and applications while monitoring end-user experience across all users, all the time.

SteelCentral is a comprehensive and integrated performance management platform that provides centralized visibility and insight to ensure optimal performance of enterprise applications while maximizing IT efficiency and productivity. It's modular in nature; you can start with any aspect of performance monitoring and grow to a unified performance view.

So, whether the challenge is monitoring performance broadly across all applications, networks and infrastructure, or delving deep into mission-critical application code or the network using packet analysis, SteelCentral is the only end-to-end solution that combines user experience, application, infrastructure, and network monitoring for a holistic view of application performance.



**Figure 1** Measure performance across end-user experience monitoring, application monitoring and network monitoring and bring everything together in a single pane of glass for unified performance visibility across all networks and all applications.

---

# SteelCentral performance management products

---

Our unique combination of end-user experience monitoring, transaction tracing, component monitoring, and network and infrastructure management maximizes the performance, availability, and productivity of any critical application.

## Riverbed SteelCentral: Drive Performance Insight...Not Hindsight

### Unified visibility

#### Manage the complete performance picture

Leverage cloud, mobile, and virtual environments without compromising visibility and intelligence.

### End-user awareness

#### Deliver unmatched end-user experience

Understand end-user experience and productivity, shifting focus from infrastructure to applications and users.

### Analytics

#### Increase IT effectiveness and productivity

Empower your IT teams and increase application availability and user productivity with automated, expert analysis.

### Streamlined troubleshooting

#### Dramatically reduce downtime

Quickly navigate from blended, business-level views to domain-level performance metrics to root cause.

### Intelligence, not just data

#### Eliminate blind spots and plan for change

Understand holistic views of your users, their application ecosystem, and the infrastructure on which it relies.

**SteelCentral Portal** blends data from SteelCentral™ and SteelHead™ solutions to create a centralized, dynamic view of your organization's application performance environment. The solution leverages data from SteelCentral application performance management (APM) and network performance management (NPM) solutions: ApplInternals, AppResponse, NetAuditor, NetProfiler, NetSensor and UCExpert. It is a single unified performance management interface that presents the data within the application model, giving you a centralized and blended view of how network delay, infrastructure availability, application code issues, configuration changes and more affect application performance.

---

## End-User Experience Monitoring

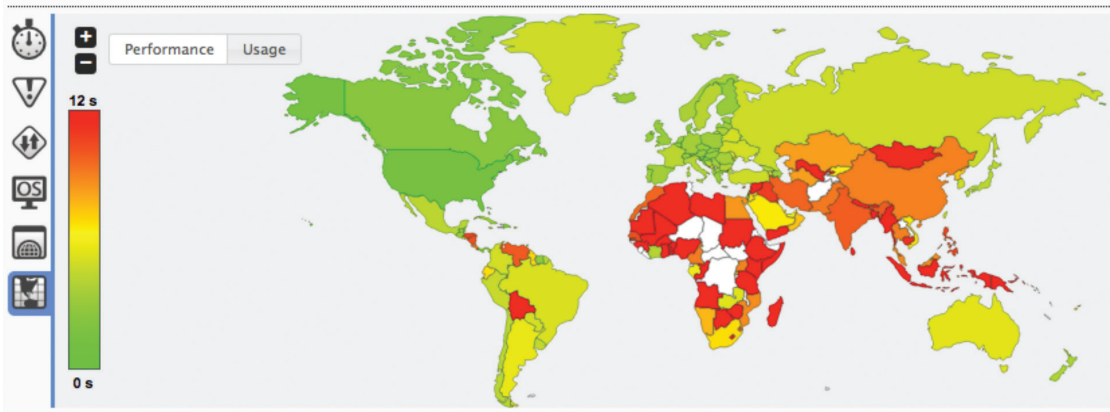
### Catch performance problems before your users do

If users expect instant access and a consistent experience with the applications they need, then you should be able to monitor and troubleshoot their unique experience.

Whether users are local, around the world, or mobile, you must be able to monitor, troubleshoot, and compare their actual experience to stay ahead of problems.

It's not enough to just manage the application; you have to know exactly what your end user is experiencing with real visibility into their browser, the network, and the server.

**SteelCentral™ AppResponse** joins together advanced application and transaction insights, comprehensive end-user experience monitoring, and rich network intelligence into a single appliance to provide broad visibility into application performance problems.



**Figure 2**  
Rapidly identify hot spots for response time delays and drill down to specific causes such as server, networks, and browser rendering.

---

## Transaction Tracing and Component Monitoring

### Track user transactions throughout the application infrastructure

Transaction tracing and component monitoring helps you track, monitor, and troubleshoot the performance of every component of multitier applications and the transactions that link them.

**SteelCentral™ AppInternals** monitors applications continuously, tracing all transactions, across all users, all the time, while recording system performance every second. This means that you can expose ALL problems—even intermittent ones. Users do not have to deal with blind spots or sampled data, and can use simple queries to get the exact insights they want.

ApplInternals gives you end-to-end application performance visibility and powerful analytics to help you improve application performance, optimize user experience and measure business impact.

SteelCentral™ Transaction Analyzer enables you to track transactions throughout the application infrastructure, troubleshoot problems in production, and predict response times with “what if” scenarios prior to an infrastructure change.

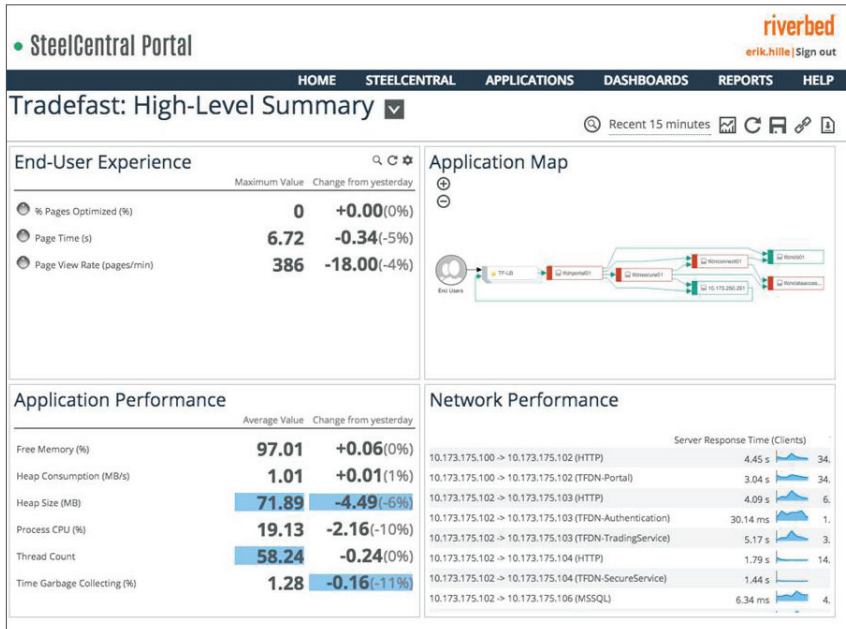


Figure 3

SteelCentral Portal brings visibility into and control over end-user experience, application performance, and network performance together in one easy-to-use collaborative tool.

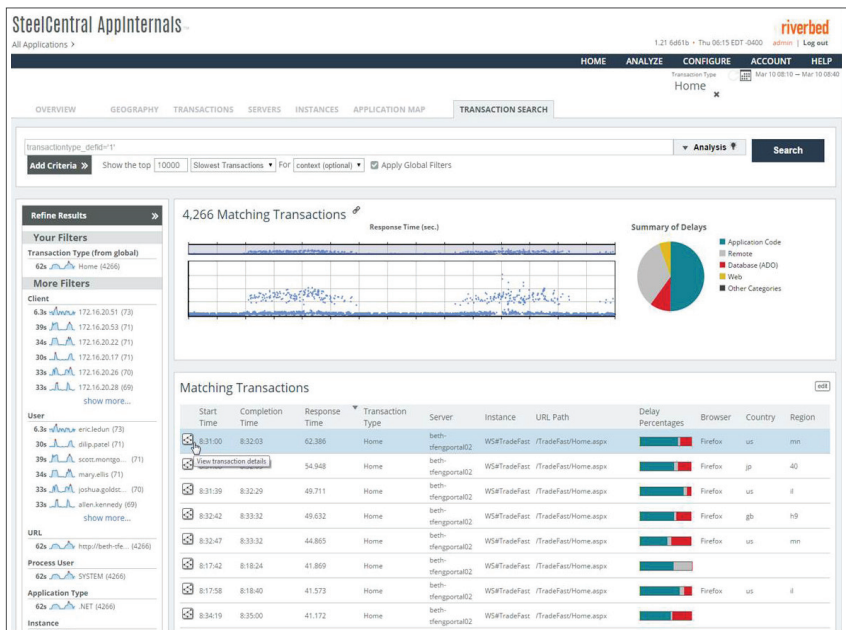


Figure 4

Identify poorly performing front-end transactions and investigate corresponding back-end-delays with SteelCentral ApplInternals.

# Network and Infrastructure Performance Management

## End-to-end monitoring, reporting, and analytics

Your infrastructure and network exist to deliver the applications that matter to your business.

Our performance management solutions alert you to network issues before business is impacted, help you understand dependencies between your applications and your network, and accelerate troubleshooting. With this integrated approach you can understand the critical impact the network has on application performance.

**SteelCentral™ NetProfiler** offers end-to-end network monitoring, reporting, and analytics. It utilizes network flow data and complements it with packet-based performance from SteelCentral Flow Gateway metrics to proactively monitor and troubleshoot application from SteelCentral NetShark and network performance.

**SteelCentral™ NetShark** provides scalable, high-performance, continuous packet capture, rapid indexing, and long-term storage to ensure that packet-level information is always available for troubleshooting and granular, real-time, and back-in-time analysis. It alerts on issues and can also help diagnose where a problem is and what is causing it.

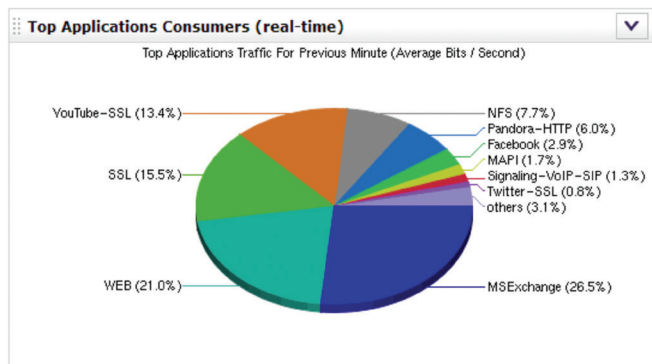
**SteelCentral™ Packet Analyzer** is a robust, packet-analysis console that enables users to quickly analyze multiterabyte packet recordings on remote NetShark appliances, NetShark Virtual Edition, and SteelHead/SteelFusion products without having to transfer large packet-capture files across the network.

**SteelCentral™ Flow Gateway** collects flow data (e.g., NetFlow, sFlow, J-Flow, IPFIX, and other popular flow statistics) from network devices, deduplicates common information, and then forwards the data to the NetProfiler console for analysis.

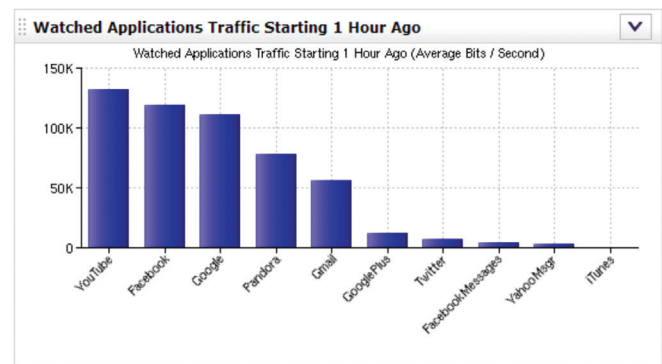
**SteelCentral™ NetExpress** combines flow monitoring, packet capture and advanced reporting and analysis in a single solution to give small- and medium-sized enterprise (SMEs) as much network troubleshooting power as solutions for large enterprises.

**SteelCentral™ NetSensor** provides infrastructure component monitoring to deliver a comprehensive picture of how your infrastructure is affecting network and application performance and availability. It combines SNMP, WMI, and synthetic testing to provide a broad overview of how the devices on your network are performing.

**SteelCentral™ UCExpert** allows continuous monitoring of Cisco, Avaya and Skype for Business (Lync) unified communications quality so you can catch and fix problems before they ever become an issue.



**Figure 5**  
Gain insight into application type and usage: Who used it, when they used it, and from where



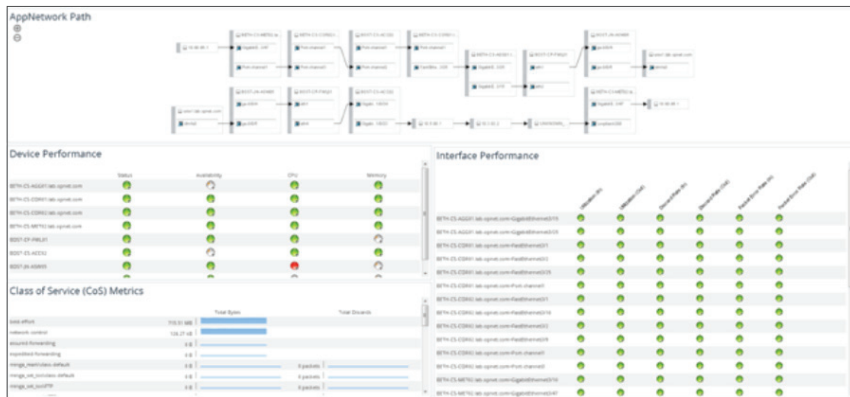
**Figure 6**  
Monitor common business and entertainment applications.

# Network Planning and Configuration Management

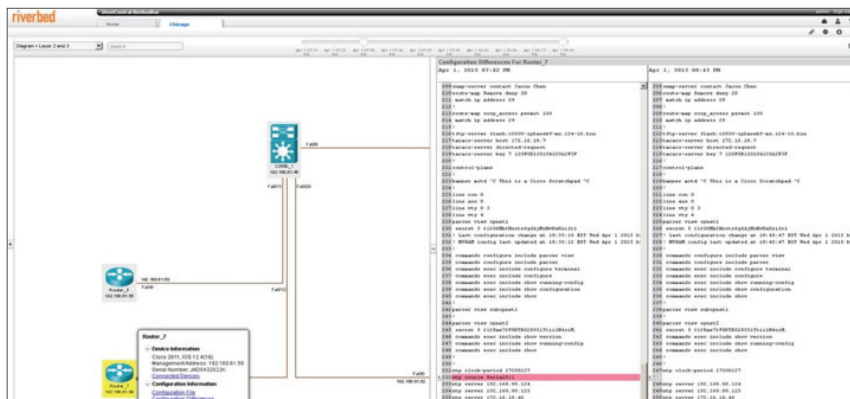
## Extending visibility to network topology and configuration

The majority of network outages are caused by people and process issues—change, configuration, release integration and hand-off issues. Without accurate, on-demand network diagrams, you are in the dark when it comes to better managing complex network infrastructure.

With Riverbed SteelCentral network planning and configuration management (NPCM), you can reduce network outages caused by misconfigurations, detect policy violations before they affect service availability, proactively manage network capacity and performance, and mitigate the risk of change with accurate network auditing, diagramming and planning.



**Figure 7**  
SteelCentral NetAuditor's AppNetwork path enables companies to track the precise network path that an application transverses throughout the network.



**Figure 8**  
SteelCentral NetAuditor improves performance troubleshooting by highlighting configuration differences and errors.

## SteelCentral™ NetAuditor Intelligent network configuration management

SteelCentral NetAuditor is a comprehensive network configuration solution that helps companies diagram, manage and report enterprise configuration. The solution automatically discovers your network elements, highlights new and modified devices, identifies configuration changes, and creates a high-definition network model.

SteelCentral NetAuditor dramatically reduces troubleshooting by enabling companies to identify configuration changes and errors. In addition, it improves IT productivity associated with maintaining up-to-date and accurate network configuration and documentation by automating the mapping process.

---

## SteelCentral™ NetPlanner

### Predictive multi-layer network planning

SteelCentral NetPlanner helps carriers, ISPs, government agencies, and enterprises facilitate service and technology deployments. The solution creates a high-fidelity network model that combines multiple sources of data to deliver accurate predictions of network behavior and performance.

It includes out-of-the-box analyses for different network architectures and technology migration plans while evaluating proposed changes for misconfigurations and performance impact. As a result, NetPlanner helps mitigate risks associated with network deployments by aiding evaluation of network architectures and technology migration plans. In addition, companies are better able to plan for network capacity, survivability, and manage network traffic.

## Gartner Magic Quadrant Recognition

Riverbed is a three-time Leader in the Gartner Network Performance Monitoring and Diagnostics (NPMD) magic quadrant and a Challenger in the 2015 Gartner Magic Quadrant for Application Performance Monitoring Suites.\*

\* Gartner does not endorse any vendor, product or service depicted in its research publications, and does not advise technology users to select only those vendors with the highest ratings. Gartner research publications consist of the opinions of Gartner's research organization and should not be construed as statements of fact. Gartner disclaims all warranties, expressed or implied, with respect to this research, including any warranties of merchantability or fitness for a particular purpose.

---

### About Riverbed

Riverbed, at more than \$1 billion in annual revenue, is the leader in application performance infrastructure, delivering the most complete platform for the hybrid enterprise to ensure applications perform as expected, data is always available when needed, and performance issues can be proactively detected and resolved before impacting business performance. Riverbed enables hybrid enterprises to transform application performance into a competitive advantage by maximizing employee productivity and leveraging IT to create new forms of operational agility. Riverbed's 27,000+ customers include 97% of the *Fortune* 100 and 98% of the *Forbes* Global 100. Learn more at [riverbed.com/steelcentral](http://riverbed.com/steelcentral).

The logo for Riverbed, featuring the word "riverbed" in a bold, lowercase, orange sans-serif font.